



LYNX 730

Slop oil decanter with online inter-phase adjustment



Making slop oil treatment more effective

The Alfa Laval LYNX decanter centrifuge is the ideal three-phase equipment for slop oil treatment, including fluids from tank cleaning, refinery waste streams, marpol and waste oil revaluation.

By using centrifugal force of almost 3,500 G accompanied by state-of-the-art technology, LYNX 730 units are able to separate the feed into three different outputs – an oily phase, a water phase and solids, achieving best-in-class results in terms of separation quality as well as process stability.

The availability of online inter-phase adjustment, with no need for additional mechanical components, makes it easy to optimize the quality of the separated oil and water phases, depending on real time process requirements.

The combination of these advanced-technology developments and exceptional Alfa Laval experience in the field of slop oil treatment makes it possible for the LYNX 730 design to efficiently remove most of the fine particles and deliver the driest possible solids.

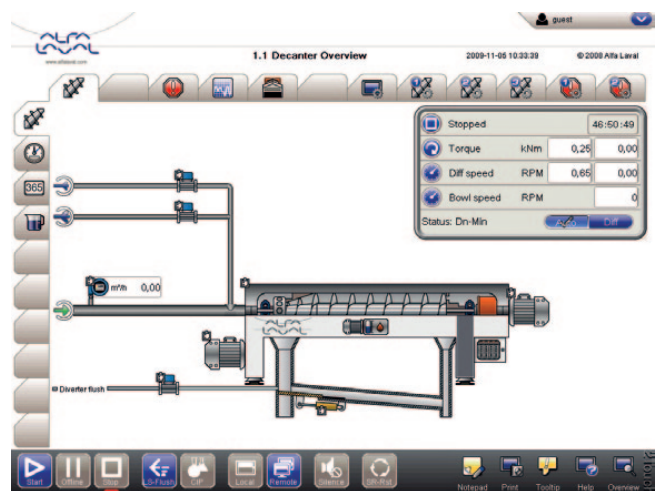
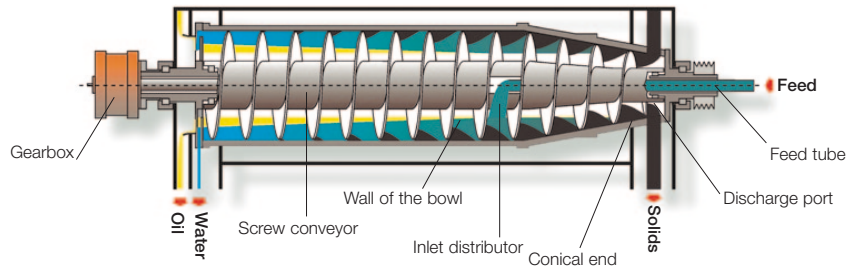


Fig.1 2Touch control system ensuring maximum decanter centrifuge uptime.

Cutaway view



Take advantage of LYNX solids separation technology

Cleaner oil and water. Achieve lower cut-point and optimize your interphase control. Improve fine removal and obtain better fluid clarity: recover oil value and get cleaner water.

- Online inter-phase adjustment
- High G Force
- Newest design technologies
- Specially designed decanter geometry for an improved 3-phase separation

Drier solids. Reduce your waste volumes. Reduce your disposal costs.

- Optimized conveyor and bowl geometries for increased compaction capabilities
- High solids handling capacity
- Precision torque control
- Precision online differential speed control

Outstanding improved wear protection. Increase the lifetime of wear parts and reduce your maintenance cycles.

- Patented feed zone design for optimal flow distribution
- Fully covered replaceable parts in tungsten carbide
- Improved solids outlet protection

2-Touch Control System. Improve your operating reliability and optimize your processes. Save manpower and training costs.

- Easy to troubleshoot and service, ensuring maximum centrifuge uptime
- Compatible with multiple industry standards and communication protocols
- Consistent and easy-to-use interfaces

Unmatched flow rate capacity/diameter. Treat larger process volumes in smaller machines and reduce your total costs per volume treated.

- Reduced power consumption
- New generation of decanter centrifuges. Latest optimized designs
- 360-degree solids outlet

Easier accessibility. Access easily the interior of the decanter. Optimize, service and clean faster, saving time and money.

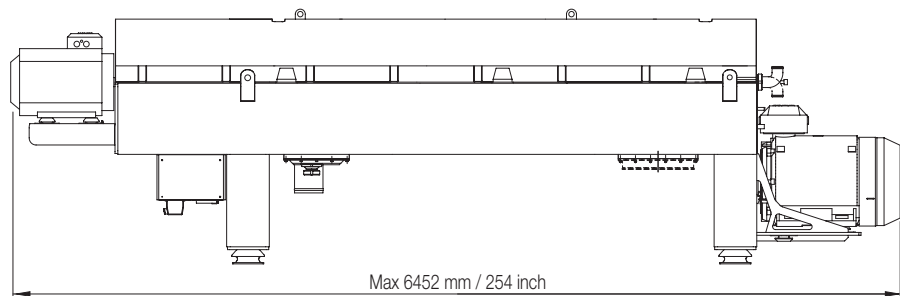
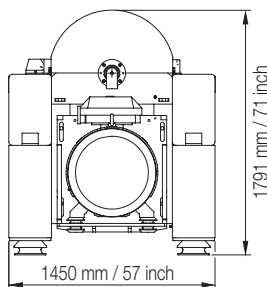
- Lighter and smarter cover design
- Quick adjustable pond dept

Technical data

Typical process flow ¹	25-40 m ³ /h (110-176 GPM)
Water flow ²	up to 40 m ³ /h (up to 176 GPM)
Oil flow ²	up to 25 m ³ /h (up to 110 GPM)
Solid flow ²	up to 30 ton/h (65,000 lbs/h)
Maximum hydraulic flow	200 m ³ /h (880 GPM)
Maximum speed	3,100 rpm
Centrifugal force up to	3,491 G
Differential speed range	2-50 rpm
Main power	160 kW (200 hp)
Back drive power	37 kW (50 hp)
Dry weight decanter unit	6,500 kg (14,300 lbs)

¹ The operating flow rate depends on the individual properties of the feed and the separation result required.

² Typical values. Please contact Alfa Laval for details.



PEE00268EN 1306

Alfa Laval reserves the right to change specifications without prior notification.

How to contact Alfa Laval

Up-to-date Alfa Laval contact details for all countries are always available on our website at www.alfalaval.com